

Something Different.

**WATSON** BIO LAB  
MADE IN JAPAN SINCE 1988

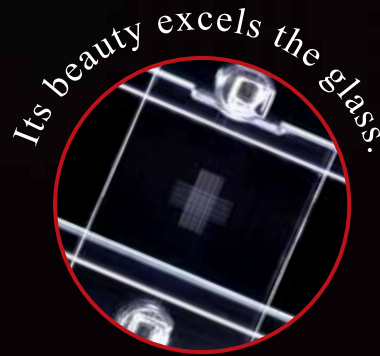


*SMOOTHER than glass!*

*CLEARER than glass!*



Plate: Polystyrene  
Cover glass: Polycarbonate



**Disposable Cell Counting Plate**

**4-Grid**

# Cell Counter Plate

Cost-saving as 4-count per plate.

Better grid linearity & smoothness,  
and lower cost compared with glass plate.

Easy to count due to clear visibility.

Plastic cover film is originally mounted on the plate.

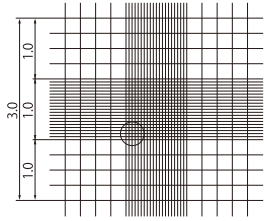
4 Grid patterns are available for choice.

GET THE BEST  
FOUNTER  
PLATE

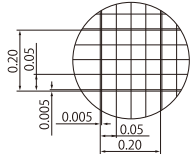
# 4 Grid Patterns

## ■ Neubauer Improved

177-112C

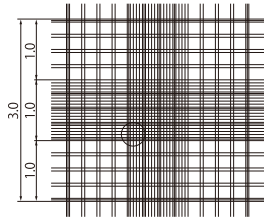


1/10mmdeep, 1/400 & 1/16sqmm

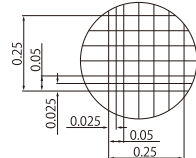


## ■ Burker-Turk

177-212C

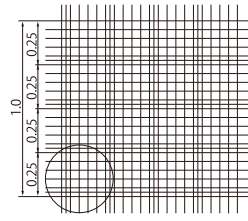


1/10mmdeep, 1/400 & 1/25sqmm

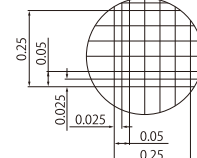


## ■ Thoma

177-312C

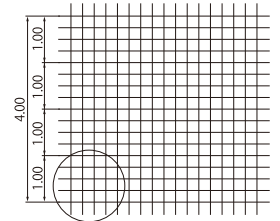


1/10mmdeep, 1/400sqmm

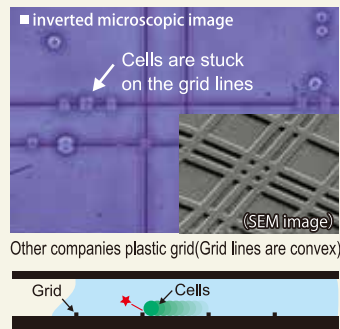
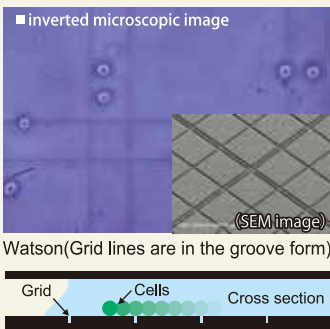
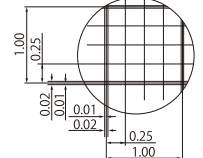


## ■ Fuchs Rosenthal

177-512C



1/5mmdeep, 1/400sqmm



Easier to count because cells do not get stuck on the grid lines that are molded in the groove form. Cells are easier to be observed because the grid lines are thinner and smoother than glass slide.



# The ready-mounted plastic cover film provides easy handling

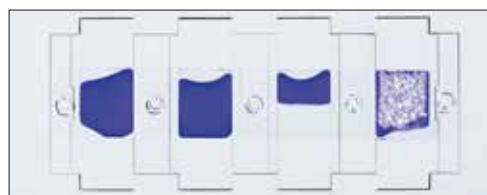
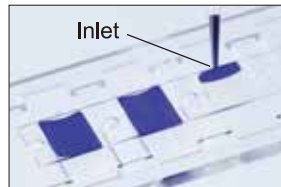
The cover film is originally mounted on the plate and it helps to reduce fluctuation of cell count caused by operator's skill.

### Packaged in a plastic case

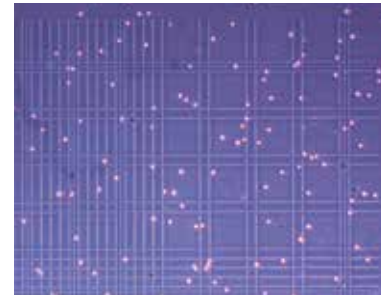
The plastic case prevents damage and stores cell counters safely and cleanly.



① Pipette 6 $\mu$ l of a sample (12 $\mu$ l only for Fuchs Rosenthal) into inlet.



② Set a cell counter on microscope and leave it for 2-3 minutes.



③ Count cells.

④ Calculate using a specified formula.

Cat.No.	Item	Packaging
177-112C	Cell Counter <b>Neubauer Improved</b>	10plates/box, 30boxes/units, 5units/case
177-212C	Cell Counter <b>Burker-turk</b>	10plates/box, 30boxes/units, 5units/case
177-312C	Cell Counter <b>Thoma</b>	10plates/box, 30boxes/units, 5units/case
177-512C	Cell Counter <b>Fuchs Rosenthal</b>	10plates/box, 30boxes/units, 5units/case

Manufactured and sold by:

**FUKAEKASEI** CO., LTD.

Head Office: 2-2-7 Murotani, Nishi-ku, Kobe  
651-2241, JAPAN  
TEL +81-78-991-4477  
FAX +81-78-991-4491

E-mail: [info@watson.co.jp](mailto:info@watson.co.jp)

<http://watsonbiolab.com>

Something Different.  
**WATSON** BIO LAB  
MADE IN JAPAN SINCE 1988

※The specification and the price etc. of the product might change without a previous notice.