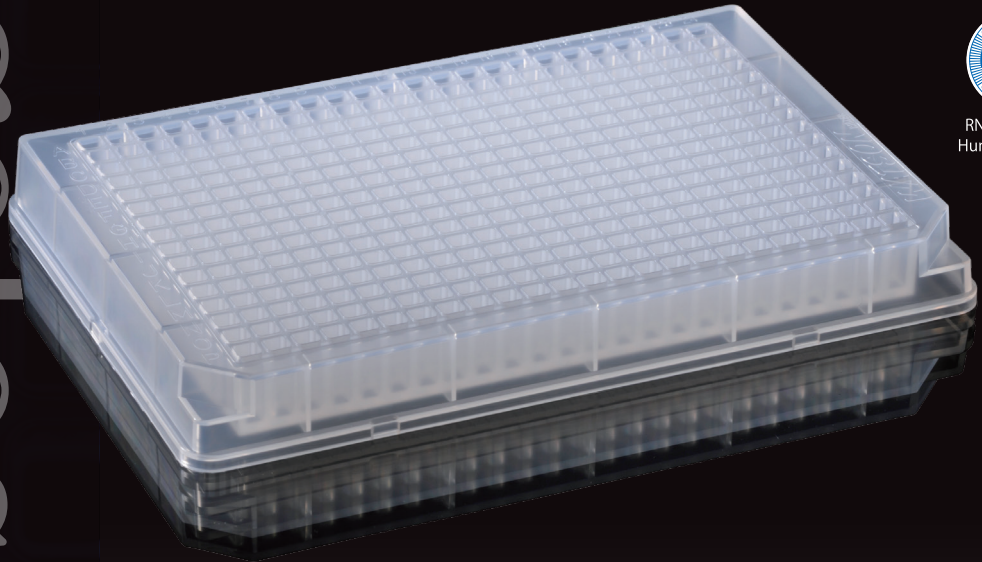


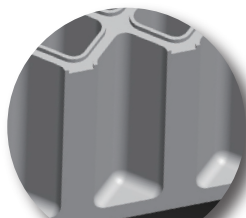
Edgeless 384well Plate



RNase/DNase/
HumanDNA free

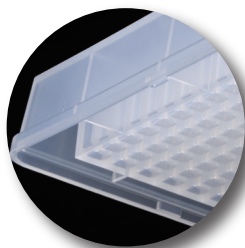


**Edges do not exist in
the square hole and the flat bottom
of 3D well structure.**

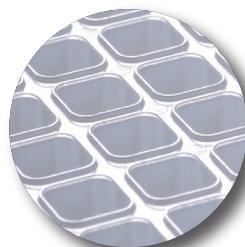


A crosssection

Edgeless design of well bottom and sidewall achieves excellent liquid release, less meniscus, and reduces bubble while pipetting.



A flat bottom surface allows easy visual recognition of a sample even in the small volume.



Individual rim of each well ensures tight sealing and prevents contamination.

Edgeless
384well Plate

Something Different.

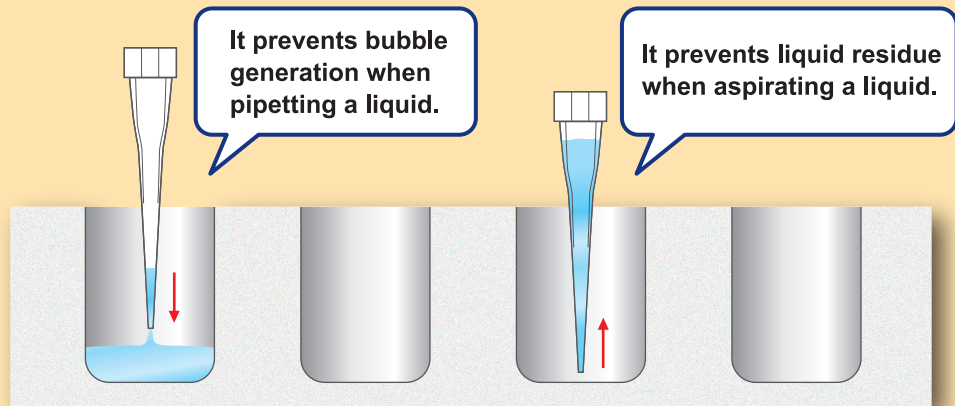
WATSON BIO LAB
MADE IN JAPAN SINCE 1988



Square hole • Flat bottom without edges, very unique moderated-contour bottom design.

Edgeless well

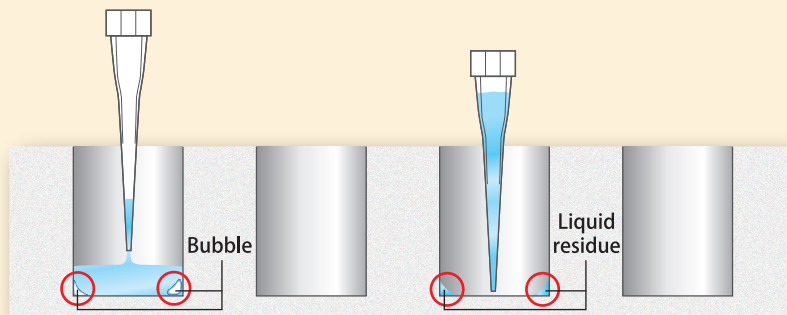
Advantages of edgeless



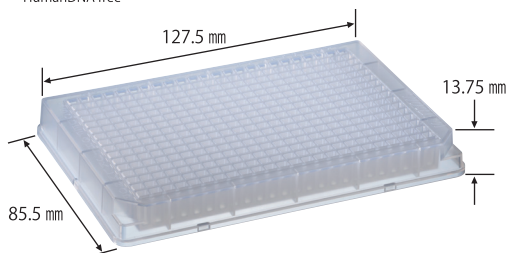
Note: These advantages are not always guaranteed since viscosity or surface tension of the liquid, or parameter setting of the pipetting device influence the performance.

Conventional well

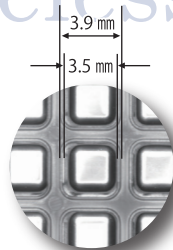
Conventional well causes bubbles or liquid residue at its edge.



RNase/DNase/
HumanDNA free



Edgeless 384well Plate



Spec:

Volume : 100 μ L / well

Material : PP (polypropylene)

Well design : Edgeless square

Well bottom : Edgeless flat

Cat. No.	Item	Unit	Case
1825-384E-110	Edgeless 384-well Plate	50 pcs. (5 pcs. \times 10 bags)	5 units

Something Different.
WATSON BIO LAB
MADE IN JAPAN SINCE 1988
<https://watsonbiolab.com>

Sales agency:
WATSON CO., LTD.
Export Division:
2-2-7, Murotani Nishi-ku Kobe, 651-2241, JAPAN
TEL 81-78-991-4489 FAX 81-78-991-4491
Head Office:
6-57-12, Minamisenju Arakawa-ku, Tokyo,
116-0003, JAPAN
TEL 81-3-5615-3591 FAX 81-3-5615-3592
E-mail:
tcr@watson.co.jp
Manufacturer:
FUKAEKASEI CO., LTD.



※The specification and the price etc. of the product might change without a previous notice.