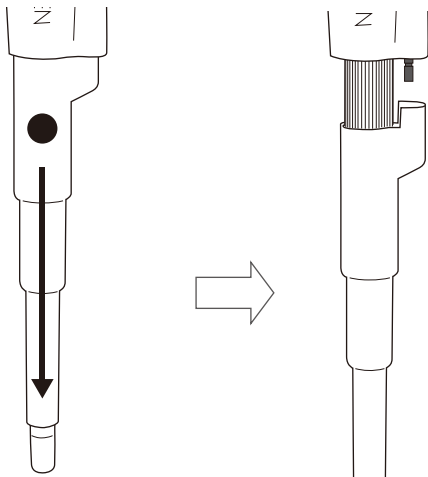


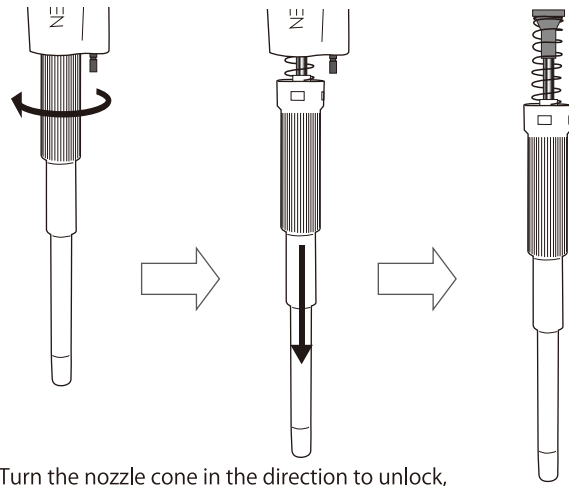
Replacement Procedure for Rainin LTS Tip-Specific Nozzle Cone 1000μL (Compatible with NT-S1000)

① Remove the eject cone



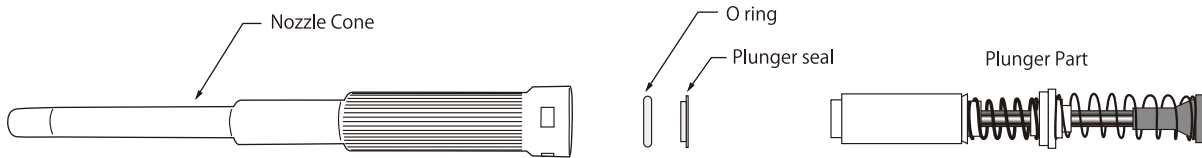
Hold the pipette upright and grasp the ● part of the ejector cone. Pull it downward to remove.

② Remove the nozzle cone



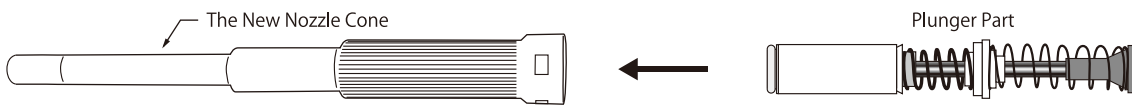
Turn the nozzle cone in the direction to unlock, then slowly pull it downward to remove.

③ Remove the plunger part from the nozzle cone.



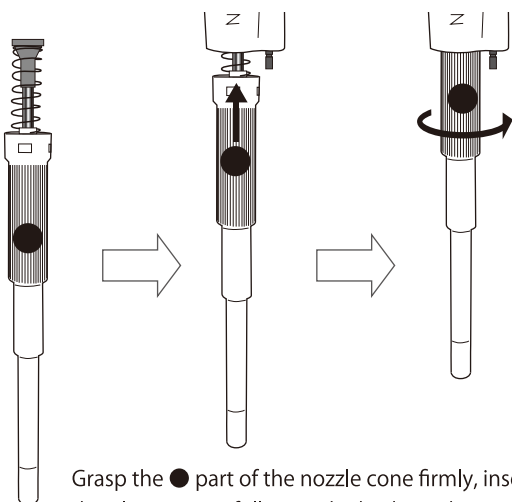
The O-ring and plunger seal remain inside the nozzle cone. Use tweezers or similar tools to remove them and reattach them as shown in diagram ④.

④ Insert the plunger part into the Rainin LTS tip-specific nozzle 1000μL.



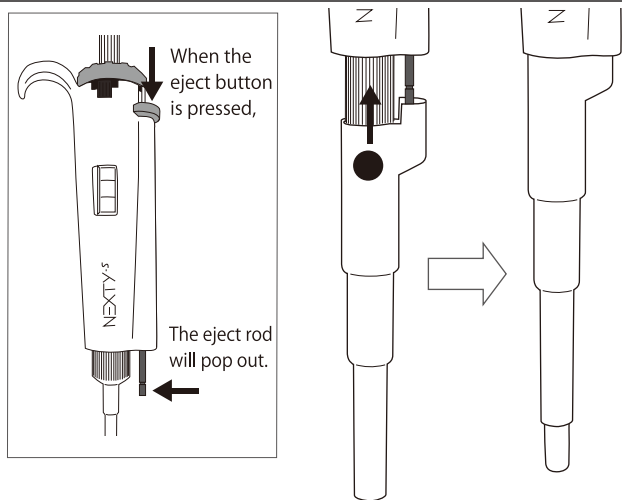
Assemble the plunger components first, then insert them into the Rainin LTS tip-specific nozzle 1000μL.

⑤ Connect ④ to the body.



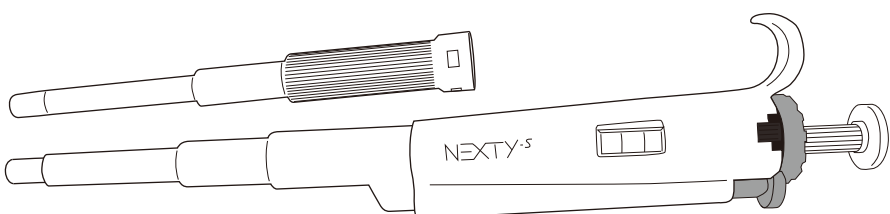
Grasp the ● part of the nozzle cone firmly, insert the plunger part fully into the body, and rotate it clockwise until you feel a click.

⑥ Attach the new eject cone.



While pressing the eject button, align the eject rod that has popped out and press the new eject cone into place.

⑦ It is complete.



Something Different.

WATSON BIO LAB
MADE IN JAPAN SINCE 1988

<https://watsonbiolab.com>

Sales agency: **WATSON CO., LTD.**

Export Division: 2-2-7 Murotani Nishi-ku Kobe, 651-2241 JAPAN

TEL 81-78-991-4489 FAX 81-78-991-4491

Head Office: 1F, 14-17 Daikanyama-cho, Shibuya-ku, Tokyo, 150-0034, JAPAN

TEL 81-3-5615-3591 FAX 81-3-6427-0740

E-mail: tcr@watson.co.jp

Manufacturer: **FUKAIEKASEI CO., LTD.**