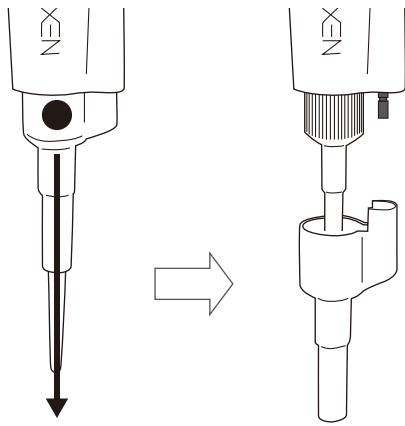


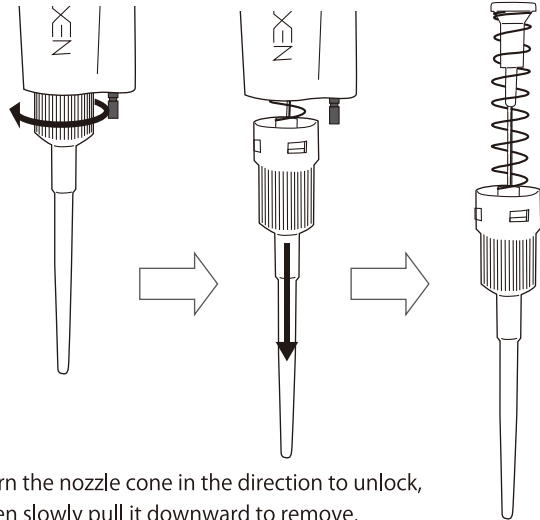
# Replacement Procedure for Rainin LTS Tip-Specific Nozzle Cone 20 $\mu$ L (Compatible with NT-S20)

## ① Remove the eject cone



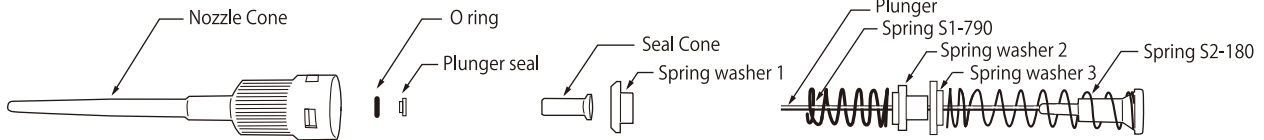
Hold the pipette upright and grasp the ● part of the ejector cone. Pull it downward to remove.

## ② Remove the nozzle cone



Turn the nozzle cone in the direction to unlock, then slowly pull it downward to remove.

## ③ Remove the plunger part from the nozzle cone.



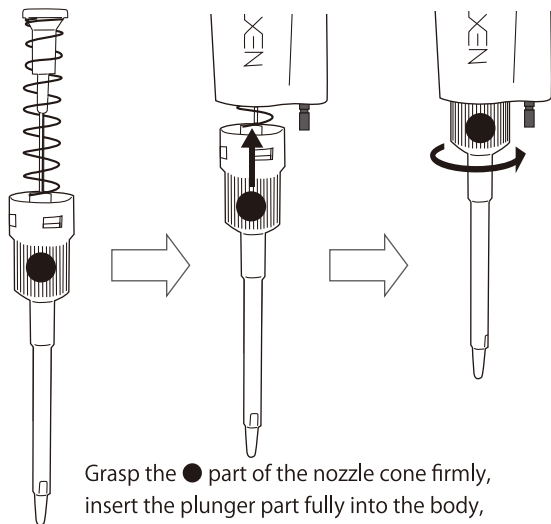
If the seal cone and spring washer 1 come off the plunger, refer to diagram ④ to ensure correct orientation when reattaching. The O-ring and plunger seal remain inside the nozzle cone. Use tweezers or similar tools to remove them and reattach them as shown in diagram ④.

## ④ Insert the plunger part into the Rainin LTS tip-specific nozzle 20 $\mu$ L.



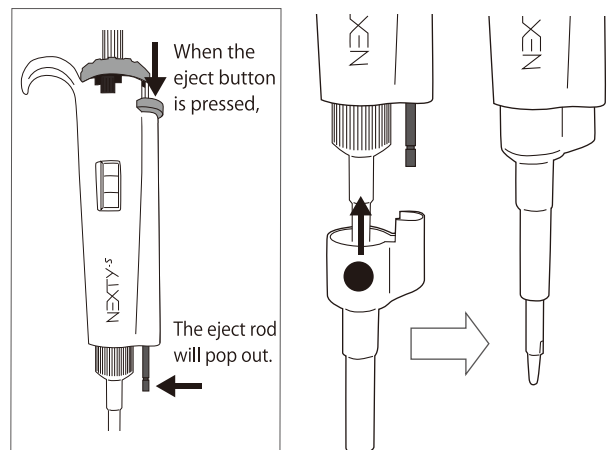
Assemble the plunger components first, then insert them into the Rainin LTS tip-specific nozzle 20 $\mu$ L.

## ⑤ Connect ④ to the body.



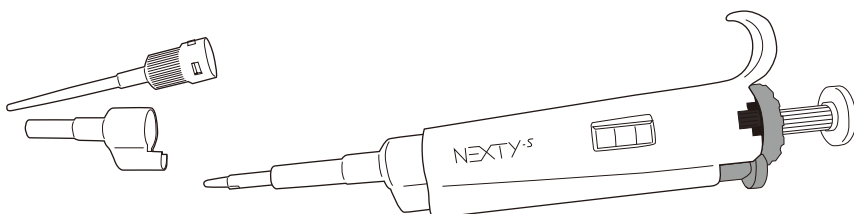
Grasp the ● part of the nozzle cone firmly, insert the plunger part fully into the body, and rotate it clockwise until you feel a click.

## ⑥ Attach the new eject cone.



While pressing the eject button, align the eject rod that has popped out and press the new eject cone into place.

## ⑦ It is complete.



Something Different.

**WATSON** BIO LAB  
MADE IN JAPAN SINCE 1988

<https://watsonbiolab.com>

Sales agency: **WATSON CO., LTD.**

Export Division: 2-2-7 Murotani Nishi-ku Kobe, 651-2241 JAPAN

TEL 81-78-991-4489 FAX 81-78-991-4491

Head Office: 1F, 14-17 Daikanyama-cho, Shibuya-ku, Tokyo, 150-0034, JAPAN

TEL 81-3-5615-3591 FAX 81-3-6427-0740

E-mail: [tcr@watson.co.jp](mailto:tcr@watson.co.jp)

Manufacturer: **FUKAEKASEI** CO., LTD.